

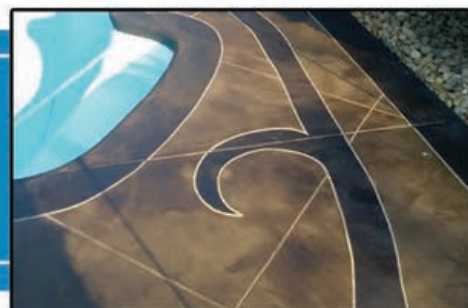
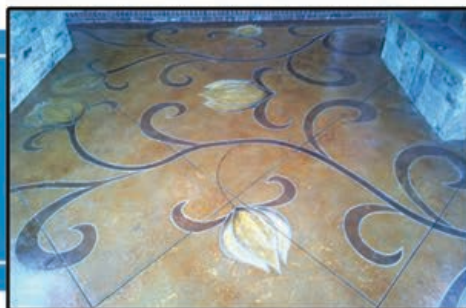
SURFKOAT.

Surface Coatings, Inc.
Manufacturers of Industrial and Decorative Concrete Materials

Technical Data Sheet

HERITAGE Reactive CONCRETE STAIN

CONCRETE STAIN SYSTEMS



HERITAGE Reactive concrete stain is an All Natural, Organic colored acid concrete stain. No other products process can produce the superb marble and antique patina style finishes of HERITAGE. This process reacts chemically with the mineral content of the concrete surface for a uniquely beautiful, deep penetrating, permanent stain. Most stains are UV stable when sealed. Used for interior or exterior. Green and blue color acid stains should be used interior only.



Specifications / Compliances

- Meets OTC, CARB, LADCO & SCAQMD VOC restrictions.

Key Features & Typical Benefits

- Provides beautiful, marble-like finish unmatched by many other stain systems.
- 9 Classic earthtone colors.
- Cost effective permanent color for most concrete surfaces.
- Contains 0 g/L VOC content making this product legal for sale to all regions of the US and Canada.
- Normally diluted 1:1 with water.

Recommended Applications

Effective on applications such as...

- Garages
- Patios
- Dining Rooms
- Basements
- Sidewalks
- Showrooms
- Most concrete surfaces where marbling and antiquing are desired

Typical Properties & Technical Information

| PROPERTY | VALUE |
|---------------------------------------------|----------------------------------|
| Solids/Active Content, Percentage by weight | N/A |
| Dry Time - Tack Free | 1 - 6 hours |
| Dry Time - Foot Traffic | Refer to Directions |
| Dry Time - Heavy Traffic | Refer to Directions |
| Re-Coat Time Window | Refer to Directions |
| Application Temperature | 50° F - 80° F |
| VOC (Volatile Organic Compound) Content | 0 grams/Liter |
| Appearance - Wet | Depends on color chosen |
| Appearance - Dry | Light, Chalky color until sealed |

Surface Coatings, Inc.
134 Davis St. • Portland, TN 37148
P: (615) 323-9461 • F: (615) 323-9816
url: www.surfkoat.com

Refer to msds prior to use.

HERITAGE Reactive Stain

Application Instructions

SURFACE PREP: Flush off the area with water. If there are any oily stains, remove with a degreaser, then prepare the surface with a wash of Surf-Prep diluted 1:2 with water. Rinse thoroughly and let concrete dry. Concrete surface must be clean and free of all contaminants and water. Do not apply if rain is forecast within 24 hours.

Always test the stain in an inconspicuous place. Allow to dry for 4-6 hours. Rinse the test area and observe the color while wet. This will approximate the sealed color.

Substrate and air temperature must be no less than 40° F and not exceed 80° F. If applied outside these limits the sealer may not achieve adequate film formation and may have excessive air entrapment, bubbles, blushing or hazing. Note that in direct sunlight, substrate temperature can exceed 150° F which can cause extreme bubbling issues.

MIXING: Dilute up to 1:1 with water if desired.

COVERAGE RATE: *First Coat*: 150 - 300 ft² per gallon* *Optional Second Coat*: 150 - 300 ft² per gallon*

*Coverage rates vary depending upon surface porosity and texture, and application method. Excessive build up should be avoided. Please note that product can be diluted up to 1:1 with water yielding double the coverage per actual gallon of concentrated acid stain purchased.

APPLICATION:

1. Protect all areas not to be stained. Mask off all adjacent surfaces with painter's tape or plastic duct tape. Use a plastic or coated cardboard as a spray shield. Plastic or polyethylene acid resistant sprayers and buckets are recommended for application.
2. If using multiple colors, always start with the lightest color first as a base coat.
3. Mop, sponge, or spray the stain over the area being colored. Apply at a rate of up to 150-300 sq. ft. per gallon of stain. Always use an acid resistant plastic sprayer.
4. Allow the stain to dry thoroughly, 4-6 hours, and rinse thoroughly by scrub brush and a water and ammonia solution such as Balance to neutralize the surface and remove residue. Remove standing water with a wet vacuum.
5. Allow the area to dry over night and seal with 1-2 of a low viscosity sealer such as Stamp Seal or a higher gloss sealer such as Stamp Seal "Gloss". Please note that on interior floors, our Cherry Surf-Wax may be used over the sealer for added protection.

Please note: Waterborne sealers may be used as well, however, they usually do not enhance the color of the acid stained floor quite as well as Solvent based sealers.

PLEASE NOTE: It is always recommended to test the product in a small, inconspicuous area (on the same concrete substrate) for desired results prior to application. Coverage rates may vary for all coatings and substrates depending on porosity, density, texture etc.

NOTE: GREEN AND BLUE COLOR ACID STAINS SHOULD BE USED INTERIOR ONLY.

Precautions and Limitations

- This product will freeze during storage. Store at temperatures above 40°F.
- All HVAC ventilation ducts should be somehow blocked prior to application so solvent fumes are not distributed.
- If using indoor, use proper ventilation while applying and for hours after application to ensure fumes are removed.
- Product is corrosive and is hazardous to skin contact and ingestion. Proper protection should be work when handling.
- It is not recommended to apply product over carpet, tile, or other types of floor adhesives.
- This product performs best when applied as one or two medium-light coats, not one heavy coat.
- Please be aware that this product when sealed may be slippery when wet. An anti-slip additive, such as Surf-Grip, can be added to reduce slip hazards.
- This product is not resistant to brake fluid, gasoline, and many similar products.
- Be aware that most green and blue colors of any acid stain brand may blacken or fade in exterior applications.
- This product may darken the surface of many new and existing concrete slabs. Test prior to use.
- It is recommended to seal over the product with UV resistant coatings only.
- This product may be diluted. Note, the higher the dilution rate, the lighter the outcome.
- Once acid stain is applied to bare, cured concrete, it is permanent! **TEST PRIOR TO USE.**

CLEAN-UP: Use soap and warm water. Dispose of containers in accordance with local, state and federal regulations.

PRODUCT REMOVAL: This is a chemically reactive concrete stain and can not be chemically stripped. A commercial floor sander, diamond grinder, or another similar mechanical machine is necessary.

SHELF LIFE: Up to one year from manufacture date in its original, unopened container stored at room temperature.

PACKAGING: Available in 1 gallon jugs.

Always read all technical information, label and SDS prior to use. This information can be found online or by calling customer service at the number below.