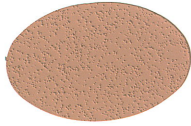
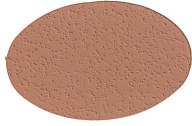


Signature Integral Colors

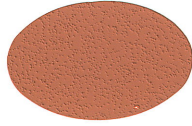
Concrete and Precast Spec 03300



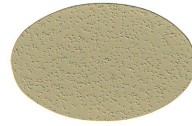
P0610 Watermelon



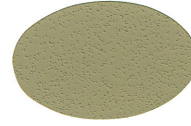
P0620 Coral



P0640 Sunset



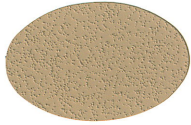
P3210 Medium Buff



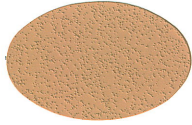
P3220 Yellowstone



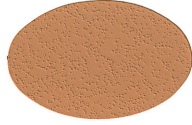
P3240 Harvest



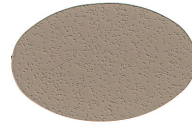
P1110 St. Paul Buff



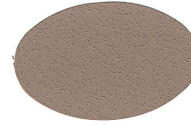
P1120 Peach



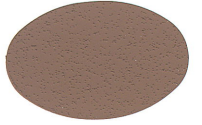
P1140 Bonfire



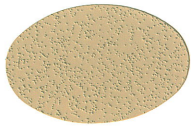
P0810 Lady Slipper



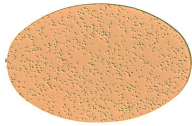
P0820 Mauve



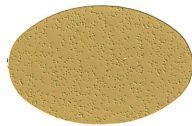
P0840 Leather



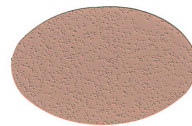
P2910 Mesa



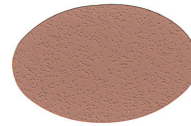
P2920 Sahara



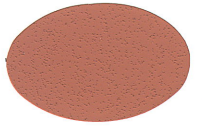
P2940 Rattan



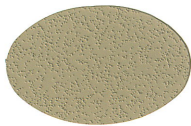
P1810 Bisque



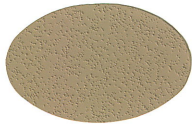
P1820 Strawberry



P1840 Red Barn



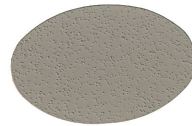
P4110 Chestnut



P4120 Woodchip



P4140 Walnut



P4510 Suede



P4520 Chocolate



P4540 Oxford Brown



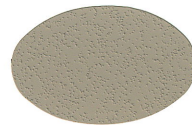
P5710 Wagon Wheel



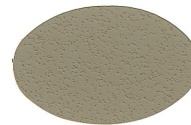
P5720 Timberwolf



P5740 Derby



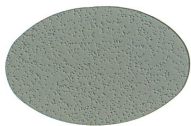
P5810 Chamois



P5820 Wicker Tan



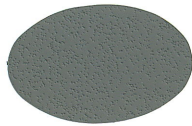
P5840 Ash Brown



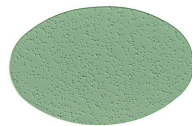
P9110 Slate Grey



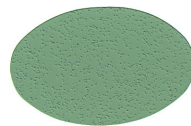
P9120 Dolphin



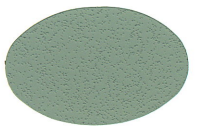
P9140 Gun Metal



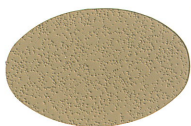
P9530 Seafoam**



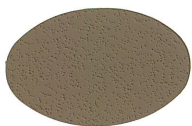
P9560 Light Jade**



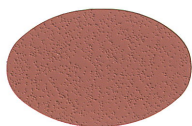
P9030 Shadow Slate**



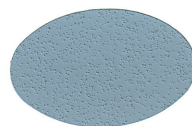
P9420 Sandy Buff



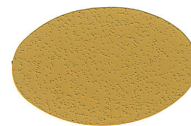
P5860 Sable



P1860 Northern Lights



P9920 Blue**



P2960 Cornsilk



P9160 Ebony

** Denotes special order

The color of raw materials or a sample strip is subject to variation from the color chip reproduction above. Colors above are as accurate as can be produced using the finest materials of reproduction. Job site variations from the above color may occur due to the differences in the local raw materials and methods of application. Before final color selection is made, a job site panel should be erected and approved.

Prism Corporation

A division of Mix Manufacturing, Inc.

1251 Arundel Street St. Paul, MN 55117 | Toll Free: (888) 440-4250 | (651) 488-4250 | Fax: (651) 488-6091 | www.prism-corporation.com

